

# SHURESTAR

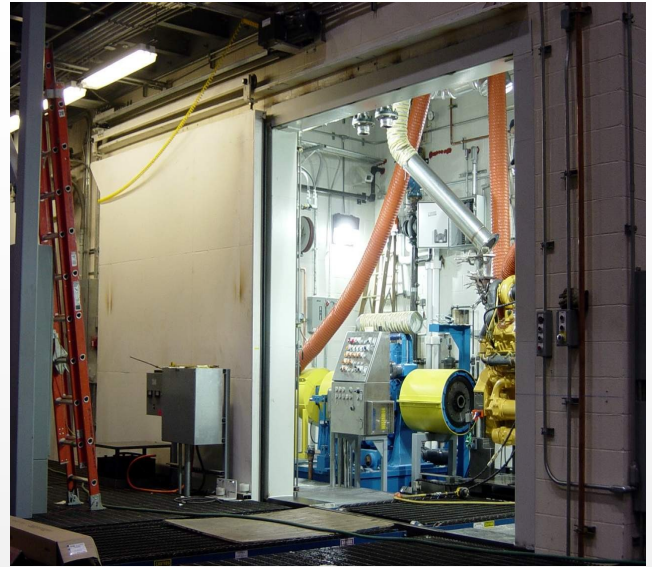
- *Architectural*
- *Sound*
- *Welding/Laser*
- *Testing*
- *Pressure/Blast*
- *Fire*
- *Wash Booth*
- *Access*
- *Environmental*
- *Oven*
- *Bullet*
- *Special Construction*

***Specialty Doors for Interior Applications***

## Sound Door Applications Tested to STC 60



**Caterpillar STC 45 Run Test Booths**



**Diesel Engine STC 51 Test Booth**



**NASA 166,000 lb Swing Door with Pneumatic Seals Tested to 165 db at 35 and 50 Hz**



**Museum Four Folding**

## Laser Booth Application Doors



**Ford Motor Company Interlocked Weld Cell Door**



**Dual Station with Internal and External Pneumatic Cylinder Laser Booth Doors**

## Battery Cell Manufacturing Doors



**Automotive Battery Manufacturing 5 PSI Pressure Air Tight Production doors**

## Paint Booth Doors



**McDonald Douglas Paint Booth Vertical Lift**



**Daimler Truck Bi-Parting Doors**

## Oven and High Temperature Doors



**BASF Automotive Paint Test Stainless Steel Explosion Proof Oven Doors**



**Truck Body 400 Degree Paint Oven Doors**

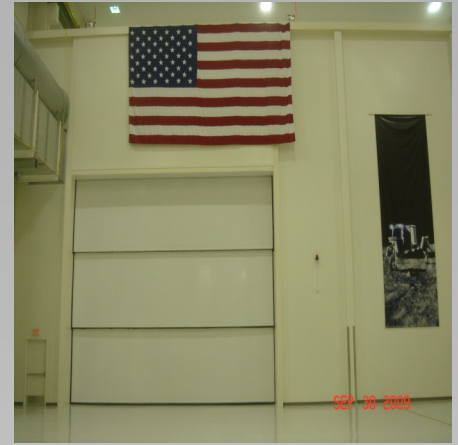
# Specialty Interior Doors Projects Vertical Lift Doors



**Fire Sliding Pressure/Air Tight**



**Automotive Emissions  
Stainless Steel Pneumatically  
Sealed Door**



**NASA Kennedy Space Center  
Clean Room Vertical Lift**



**High Production Self Supporting**



**Double Swinging Sound Fire  
STC 51 Door**



**XEROX Explosion Proof Full  
Pneumatic Sliding Door  
System**



**Overseas Stainless Steel Jet  
Engine Test Cell STC 56 Door**



**US Army High Explosion Proof  
Gas Tight Door and  
Secondary Air Tight Door**

Distributed by:

**SHURESTAR**

2498 Commercial Drive,  
Auburn Hills MI, USA 48326

**Phone: 800.679.1230**

Fax: 248.365.4383

Email: [sales@shurestar.com](mailto:sales@shurestar.com)

**Web: [www.shurestar.com](http://www.shurestar.com)**